

Marys River Messenger

The Marys River Grange Newsletter



Vol. 6, Issue 5

May/June 2024

Growing Season!



Thank you, MRG Plant Sale set-up crew! This annual event, held on April 27th this year, benefits Philomath Community Services.

From MRG #685 President Mike Terry:

At the beginning of every business meeting, we open with a phrase which has meant a great deal to me over the last few years; *“The Hour of Labor has arrived, and the work of another day demands our attention.”* It is a short line in our opening ceremony, but it is captivating. I’ve contemplated this phrase and pondered on its application. Mostly, I’ve reflected on it as a mantra to get me through arduous tasks. However, I’ve come to realize that the hour of labor isn’t just the big things (although it most certainly can be), but also the little moments, those times where we see an opportunity to make a change, an impact, a part in a greater whole.

Like the hero’s journey which starts with a call to adventure, the hour of labor is our call to do good for our community, for our family, for our friends. It is not to be feared, but welcomed with open arms for us to provide for one another in body, mind, and spirit. The Hour of Labor isn’t just our business meetings when we are called upon to

make decisions, but the time and energy we spend in the little moments and the big.

Grangers, you are heroes. You are courageous and selfless, inspiring and resilient. You see the call of the Hour of Labor and answer it. Sometimes, you may not even realize you are answering the call. It is those times when one comes to improve the hall, one comes to an event to share their time with our community, or even when one reaches out to say “hello fellow Granger.” Partaking in the Hour of Labor, saying “I will be a part of the community and share my presence” is a commendable and righteous act.

I want to thank all of our members who have dedicated their time and resources to making Marys River Grange #685 a flagship Grange here in Oregon. From those who maintain our hall and grounds, to those who staff our events, and those who support us by being in our near presence, to those who wish us well from afar, you are my heroes.

Yours truly,
Mike

Marys River Grange Happenings

Moonlight Country Mixers, 1st Friday & following Mondays – 7-10 pm, \$5 adults/\$4 under 18; host/instructors DJ Luke Coomber & Jamie Lee

Bluegrass Jam/Workshop, 2nd Weds. – 7-10 pm, \$7 adult/\$5 youth

BINGO, 2nd Friday of the month, 6-8:30 pm, \$10 for 10 games (3 cards each), \$1 blackout tickets

Yoga at the Grange – Tuesdays, 6-7 pm. \$10 (\$5 for Grange members)

Wood Carving Circle – 3rd Weds, 5:30-8:30 pm.

Marys River Grange #685 regularly meets on the first Wednesday of each month at 7 PM at 24707 Grange Hall Road in Philomath. Potluck at 6:30! All welcome.



Longtime Grangers Maisie and Susan enjoyed the Windy Hill kids at MRG's plant sale. The best part!

Yoga at the Grange Summer 2024

Tuesdays 6pm - 7pm
June 11 - August 20, 2024

Classes are \$10 for Grange members,
\$15 for non-Grange members*.

Questions? Please contact
Laura Coen: 331-201-5458



**new pricing, beginning summer 2024*

Contact marysrivergrange@gmail.com or
541-829-2907. See also: marysrivergrange.org
[facebook.com/Marys-River-Grange-Hall-288171007887164/](https://www.facebook.com/Marys-River-Grange-Hall-288171007887164/)
To rent the Grange Hall, see Rental at marysrivergrange.org

Mt. Union Memorial Event, May 11: 10 AM–12 PM
at Mt. Union Cemetery Flagpole (2987 Mt Union Ave). Join us to honor currently serving military and the fallen as well as Memorial Day, Armed Forces Day, Peace Officer's Memorial Day, and the Shipley family.

**Bluegrass
Jam/Workshop**
-2nd Wednesday Every Month-
May 8, 2024
Marys River Grange Hall
24707 Grange Hall Rd. Philomath
7-10 pm
\$7 Adults \$5 Youth
No alcohol – Listeners donate as desired

**SPOON
JAM!**

Spoon and other green-
wood carving circle

What: Carving, skill sharing, community building
Who: Beginner to Advanced carvers (Ages 16+)
What to bring: Your own tools and wood
When: 3rd Wednesday every month, 5:30–8:30 PM

Donations welcomed for use of space

RSVP Required
Contact: Kiko Denzer,
kiko@handprintpress.com,
or text 541-740-7243

Marys River Grange
24707 Grange Hall Road
Philomath, Oregon
97370

Housemate wanted in Philomath:

Looking for a third housemate to complement the two active senior citizens that currently live in a updated ranch house with large windows, brand new floors, and a big backyard. \$825/850 plus utilities.
Email Izzie Elliott, izemaui@gmail.com

Farmers' Market, May 26 to Oct. 20: 11 AM–3 PM
at the Philomath Community Library parking lot (1050 Applegate Street). Stroll through on Sundays. Support and empower local food growers, producers, and makers!

Thank you, Granger Giana Bernardini, for being the driving force behind the creation of the City of Philomath's Heritage Tree Program!



Marys River Junior Grange Hall Remodel 2024

The next step in renovating the Junior Grange Hall will get underway in mid-May. The smaller of our two halls has come a long way since 2009, with several major structural repairs undertaken. This year the building committee intends to remodel inside and out to complete the mold remediation and provide a more efficient, modern and attractive space for Junior Grangers, members, and renters.

Interior and exterior siding will be replaced, windows and French Doors added, insulation added, moisture barriers installed, lighting replaced, and more.

The Oregon State Grange has awarded Marys River Grange a \$5,000 grant, and we have been saving money since the foundation repairs, so we have most of our anticipated \$13,000 cost ready to go. Our material costs are greatly helped by Spaeth, who is providing a generous discount to our Grange. Thank you, Spaeth!

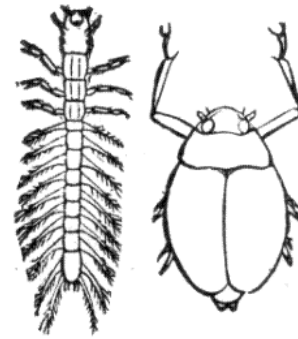
This large scale remodel is scheduled to be underway all summer, with the goal of completing the work before fall. It means that the Junior Hall will be unusable for some time, and will also impact the main Hall due to storing everything kept in the Junior Hall in normal times.

WE NEED HELP! This project is going to require labor, support, labor, some more labor, donations, a lot of work, cheerleading, and some serious effort. If you can (or want to learn how to) rip plywood off a wall, staple insulation, wrap a building, wire an electric box, install windows, install interior siding, pull nails, measure and cut wood, install lights, hand us cash money or a check, paint, or other amazing feats of remodeling (no plumbing is involved!) please contact Mike Terry at 541-829-2907 or maryrivergrange@gmail.com, or Kurt Weidenmann at 208-501-4258 or krw2125@gmail.com, to volunteer to assist the building committee on this project. **We would LOVE your help and your company.**

We hope to enhance this remodel in the future with a new porch to the north and storage cabinets along the east wall to finally complete a long series of renovations started in the early 2010s.

- Sonny Hays-Eberts, MRG Building Committee

*Coming together is a beginning.
Keeping together is a progress.
Working together is a success.
Plan your work, and work your plan.*



MAY 18TH, FAMILY EVENT: Aquatic Insect Sampling and Identification

Play the role of a scientist as you collect and identify aquatic insects to discover the health of our aquatic rivers! This event is FREE.

* A local scientist will lead our group in introduction to stream health and aquatic insect sampling techniques.

* We will collect stream samples using large "D" nets and small hand nets.

* You will learn how to identify organisms found by using dichotomous keys, books and magnifying scopes and discuss how these organisms relate to stream health.

DATE: SATURDAY MAY 18TH

TIME: 10:30 AM

**LOCATION: Marys River Park parking lot:
300 S 11th St. Philomath**

WHAT IS PROVIDED: Nets, tubs, identification materials, magnifiers, books

WHAT TO BRING: Rubber boots or shoes that you can wade into the river, weather appropriate clothing.

QUESTIONS: CONTACT Stacy Moore 541-908-1093.
No need to sign up - just come have fun and join us!



Youth members explored beaver, cougar, and bear skulls and felt the luxurious fur of otters, bear, mink and other animals during the youth activity on April 3rd. Participants learned about animal adaptations and what special features help each animal survive. Each person then created a drawing showing their favorite animal in its habitat and what helps it flourish. The youth loved getting up close and personal with animals they had never seen in the wild before.

Women of the Grange

The Women of the Grange completed packing up the Junior room in preparation for the upcoming Junior room remodel beginning next month. All like items are sorted and stored in labeled totes for protection. A master storage plan is at hand so that Grange activities will have access to supplies during the next few months. The Junior room has been heavily utilized as a storage room for event supplies as well as a place where historical and every other what not items reside. Take heart Grangers, the Building Committee has wonderful plans for the space!

As we work at the Hall together, many ideas and suggestions arise. A lost and found basket has been placed in the entry alcove. Please check it if you're missing something.

The Women of the Grange meet on the 3rd Sunday of each month for friendship, enrichment, and shared experiences. All are welcome! Please contact Suzy Johanson for questions and suggestions at 541-908-0283.

Benton County Granges Host Bingo:

Willamette Grange – first Thursday & third Friday

May 2nd, 6 PM Greenberry Tavern

May 17th, 6:30 PM Willamette Grange Hall

Fairmount Grange – first & third Saturday

May 4th, 6 PM Fairmount Grange

May 18th, 6 PM Fairmount Grange

Marys River Grange – second Friday

May 10th, 6 PM Marys River Grange

Thank you, Bingo Caller Lyle Utt, for all you do!



MRG's past Presidents Sonny Hays-Eberts, Toni Hoyman, and Jay Sexton share a lighthearted moment as Sonny is installed as MRG Musician during January's ceremony for 2024 officers. Jay is currently President of the Oregon State Grange, with Toni as First Lady, and together they lead Willamette Grange #52. - photo by Suzy Johanson

Ask yourself: What kind of a Grange would my Grange be if every Granger were just like me?

Read more local news at philomathnews.com



A rising star in the West! Western Star Grange #309 reforms

Across the Willamette River from our little Grange, in the heart of the grass seed capital of the world, a historic Grange hall has been given new life. On April 22nd, State President Jay Sexton led an inquiry meeting where 13 individuals stepped forward to reform the subordinate Grange. The group is a mix of locals who are entirely new to our fraternity and other Grange members who will be joining as affiliates from Granges such as Willamette Grange #52, Lacombe Grange #907, and our very own Marys River Grange #685.

Originally a Methodist Church built in 1884, the building and lot were sold to the Grange in 1902, and Western Star #309 was formed. However, due to dwindling numbers during the 2000's and 2010's, the Grange was forced to declare dormancy in 2018. State Grange policy gives a 7 year grace period of dormancy before any assets are sold while the State Grange attempts to reestablish the community Grange. Since Western Star #309 is within that period, its new members will be given stewardship of the property and the Grange will keep its designation as the 309th Grange founded in the State of Oregon.

Although the hall will require much needed maintenance, its charm and the fond memories of Halloween dances, harvest festivals, and summer picnics fuel the enthusiasm of its new members. Its next meeting is scheduled for May 21 at 7:00 where members will likely choose their officers and begin planning for a bright, shining future.

- Mike Terry, President of Marys River Grange #685

The newest park in Philomath is Paul J. Cochran Veterans Memorial Park located at 1545 College Street. The park is substantially completed but the granite memorial has been delayed due to design and shipping of materials. Even so, Philomath residents can enjoy the seating areas and playground at the park while waiting for the grand opening which will be announced at a later date.

Willamette Grange #52 Updates

We have been working hard on some big projects for this year. The order for the 2nd story vinyl window replacements was completed and they should arrive early July. Volunteers will be working on preparing the trim to be ready. Work has also continued on completing the drywall downstairs and we have engaged a new electrical from Junction City, Balanced Electric. The contractor is Kim McBride, a member of Long Tom Grange!

In between work on the Hall we engage the community with Bingo twice each month at Greenberry Tavern - the first Thursday of the month, and at the Hall on the 3rd Friday of the month. We have been able to have youngsters playing at the Hall and although we are required to payout to the parents, we have a plethora of stuffys for them to choose from in addition to their "winnings". It's a great way for kids to use their newly acquired number and letter knowledge. The Greenberry Tavern appreciates the added business Bingo brings in and we make new friends and possible new members!

We have several fun events planned and always try to have a little bit of education, music, treats, and lots of fun and games for all ages!

Yours Fraternaly,
Toni Hoyman, Co-Secretary Willamette Grange

At WG:

Saturday May 11, 10 - 2

Mother's Day Flower Festival

Kids can plant a flower or herb pot for their moms for free
Plants and things for sale from local vendors
Music and Treats

and of course

Beautiful Flower Bouquets, perfect for moms!

*available for a donation to Window Replacement Project

Sunday June 2, 10-2

Bees and Trees

Learn about all kinds of native and honey Bees
Outdoor games and activities for kids - catch some bugs!
Displays
Music and treats

Willamette Grange #52 meets on the second Sunday of the month, potluck 5:30 PM, 27555 Greenberry Road.

Never stay away from the Grange because the Grange is not perfect. How lonesome would you feel in a perfect Grange?



Gathering Together Farm
Certified Organic Produce
Gourmet Restaurant
Farmers' Markets
Wine Dinners
Farm Tours
Catering
CSA

the finest in organic produce
25159 Grange Hall Rd, Philomath, OR 97370
Farmstand 541-929-4270 | Office 541-929-4273
www.gatheringtogetherfarm.com

Are you interested in helping Philomath organize a Family Friendly All wheels Skate Park? Committee is now forming to assist the park advisory group.

Help make the Philomath Skate Park a reality.

Email Izzie Elliott, Babsphilomath@gmail.com



Certified Organic

www.sunbowproduce.com



JESSIE & DAVID BLUME
FARMERS/OWNERS

CHICKEN
BEEF
PORK
TURKEY

TOTUMFARM@GMAIL.COM
WWW.TOTUMFARM.COM

Health Care for Farm Workers

Farm Clinic is expanding services to uninsured & underinsured agricultural workers in Benton, Linn, & Lincoln Counties.

Any small-scale & family-run farms (vineyards, tree farms, dairy, ranching, etc.)

Contact: Lisa Quick, Community Outreach & Farm Clinic,
541-758-3000

If you or someone you know who works in agriculture, forestry or the fishing industry is struggling, call or text **833-897-2474** for help. The Agristress Helpline is free, operates 24 hours a day, seven days a week, and has trained counselors with experience in those industries who can take phone calls in 160 languages, with English, Spanish and Vietnamese professionals available to respond by text.



MAREK & LANKER LLP
Attorneys and Counselors at Law

Ronald L. Marek
810 SW Madison Avenue
Corvallis, OR 97333-4513
541.754.1411 phone
541.754.1413 fax
rmarek@peak.org

Estate Planning • Elder Law
Trust and Probate Settlement

Windy Hill Farm
has goats for sale!

For more information contact Laura Coen
 331-201-5458
 lauraploeg@yahoo.com
 www.windyhill-familyfarm.com

April's Haiku Foolishness. 2024

Trees are shades of green,
 peas, tea, and broccoli, too
 Don't forget envy

I am such a Fool
 to hold regrets from long past.
 Time to make new ones.

If a Koan is
 written in a dark forest,
 can a bear read it?

Follow the rainbow
 for that great Pot of Gold or
 a deep muddy ditch

April's sunny day
 Doctor's appointment and then
 DQ and Blizzard

Is it possible
 for me to run out of words,
 Can AI help me?

- Marion Whitney

Music in the Philomath City Park, 6-8pm:

May

- Thursday May 16 - Philomath School Bands - Performances by Philomath students
- Sunday May 26 - Chipindura Marimba - Zimbabwean music

June

- Thursday June 20 - Revel'n - Bluegrass & Old Time Country
- Sunday June 30 - DRTR - Americana & Blues

Cyrano's
BOOKBINDING

BookRepair/Restoration
 Custom Binding
 Fine Art Supplies
 Unique Art Papers
 Classes

361 SW 2nd St
 Corvallis Or 97330

M-F
 10a-6p

541-286-4661
 stpcyrano@gmail.com



Susan Stogsdill, Owner

PHILOMATH
HOUSECLEANING
 thorough * reliable * trustworthy

Giana (415) 217-9446
 cleanhousegb@gmail.com

Greg's
Honey Do Service
 LLC

Greg Mickenham
 General Contractor
 OS# 227578

541-740-2425

gregmickenham@gmail.com

Jobs big & small! - Free estimates

Senior Dog Rescue of Oregon, founded in Philomath over 20 years ago, rescues and re-homes dogs age 6 and up. They save older dogs left at shelters; dogs whose owners died; dogs whose families came apart. 100% donor funded, 100% volunteer, 100% foster homes. All of the dogs who are put up for adoption either stay with their current family until a home is found for them, or they are fostered. Foster families are always needed to provide love, patience, and kindness. SDRO provides food, supplies, vet expenses. SDROregon.com for more info. Mail donations to 2397 NW Kings Blvd. #130, Corvallis, OR 97330.



Hiking the C2C Trail

I have been interested in walking the Corvallis-to-the-Sea (C2C) Trail for the last couple of years. This was partly because the route goes past our house on Old Peak Road, and we often see hikers and bikers passing our place, and it seemed like a nice thing to do: walk over the Coast Range to the sea.

The trail is an impressive grass-roots effort that started as a dream 50 years ago, gained traction in 2003 when the nonprofit C2C Trail Partnership was formed, and reached fruition in 2020 when the final new trails on Forest Service land were completed. The 60-mile walking route starts in Corvallis and ends at Ona Beach, and is a mixture of public roads, forestry roads, decommissioned roads and connecting trails. The 55-mile cycling route follows a different route for most of the western half of the trip. See [Corvallis To Sea Trail | Linking the Willamette Valley and the Pacific Ocean \(c2ctrail.org\)](https://www.c2ctrail.org)

Stacy's brother Kent was visiting us, so last week he and I teamed up to walk 52 miles of the trail, a shortened version starting from Old Peak Road, with Stacy as our support crew. This allowed us to ease into the walk by carrying daypacks for the first 22 miles over two days, with Stacy shuttling us back home for the first night, dropping us off again in the morning, and then meeting us at Big Elk Campground, near Harlan, for the second night. The route goes through the Corvallis Watershed, climbs to the high point of 1,780 feet on Woods Creek Road, follows some connecting trails and forestry roads, then gradually descends via backroads to Harlan.

The next two days we were in backpacking mode and the trail weaved its way westward mostly on decommissioned and current Forest Service roads, connected by new trails. There were quite a few ups and downs. There were occasional patches of old growth Douglas-fir trees with enough big sturdy limbs that might be attractive as nest sites for the threatened marbled murrelet. Since we knew rain was on the way, we put in 18 miles on our third day, camped beside a road near Wright Creek, then slogged it out in the rain for the final 12 miles to the coast on our final day.

We saw plenty of bear and coyote poop and elk tracks but didn't stumble upon any along the way. I enjoyed keeping a daily bird list and noting showy wildflowers, such as trillium, violets, lady's slippers and skunk cabbage.

We saw no people on the trail for four days, so it had quite a remote feeling. Although it doesn't boast magnificent views, the varied terrain does give you a very good taste of the Coast Range. Camping options are limited to the community-run Big Elk Campground and Forest Service lands. Water sources are also surprisingly few, so that will be an issue for hikers later in the summer.

The trail was very well sign-posted at each intersection, there is a GPX file you can download from the C2C trail website, and also an excellent map can be purchased at local hiking and biking stores.

Once we made it to Ona Beach, dipped our hands in the ocean, we then celebrated our successful trip over a beer and meal at Rogue Brewery in Newport.

I highly recommend the trip to anyone with a good level of fitness. The road surfaces can be hard on the feet, so I suggest some good training walks in the shoes that you will complete the journey in. - Peter Moore



Granger Nancy and one of the Windy Hill kids.

Celtic Forge

BUY LOCAL

541-360-8759
celticforge.net
celticforgebrass.etsy.com

KEY RINGS

HAND FORGED
SOLID BRASS

SLIP-ON \$25 INFINITY \$20

EARRINGS

HAND CRAFTED
SOLID BRASS

CELTIC SYMBOLS \$30 INFINITY \$30

IN STORE: CORVALLIS MUSEUM

**A GIFT TO BE
REMEMBERED BY**

Send items for the *Messenger* to Judy Hays-Eberts at marysrivergrange@gmail.com or mail to Marys River Grange, PO Box 1301, Philomath, OR 97370. No fee for business card-sized advertisements from members of MRG.
Deadline for May/June Messenger: April 22nd

Marys River Grange #685
 PO Box 1301
 Philomath, OR 97370
 marysrivergrange@gmail.com
 541-829-2907



Jamie Lee Dancing & Coomer Dance & DJ Presents

Moonlight Country Mixer

7 PM - 10:30
 Marys River Grange
 24707 Grange Hall Rd.
 Philomath, OR 97370
 Under 18: \$4 | 18+ - \$5

Limited Parking! Park at Grange only please

All Concession sales benefit the Grange hall

Special Event!

STOMPEDE 2024

Friday May 3

COMPETITION LINEUP

LINE DANCE
 COUNTRY SWING JACK & JILL
 LINE DANCE CHOREOGRAPHY

\$10 PER EVENT
(PAID DAY OF)

If not competing: \$5 Cover for social dancing

PRIZES

1 - 3 DAY - GA TICKET
PER QUALIFIED COMPETITOR

A CHANCE TO COMPETE TO PERFORM ON THE MAIN STAGE

Marys River Grange Announces

BINGO

Game Night

Friday May 10
 6:00 PM - 8:30 PM*

24707 Grange Hall Rd, Philomath

You're Invited!

A family friendly, fun fundraising event for Marys River Grange

10 games: 5 regular, 5 special pattern
 Plus: 1 blackout with Block of Nine prize

Ticket prices are
 \$10 for 10 3-on games (3 cards for 10 games)
 \$20 for 10 6-on games (6 cards for 10 games)
 \$1 per blackout ticket

50/50 split on prizes/fundraising

Drinks and snacks for sale

* End time is estimated, and may vary depending on length of individual games